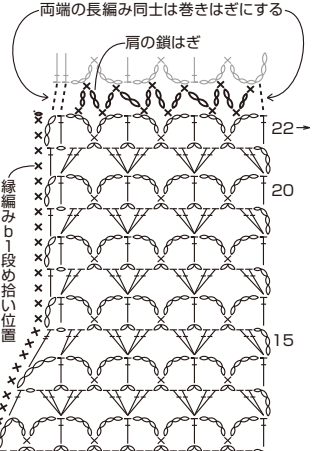
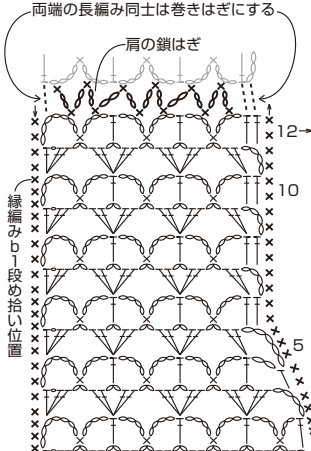
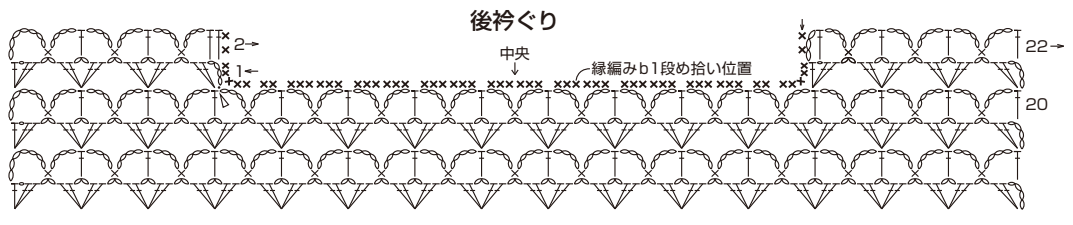




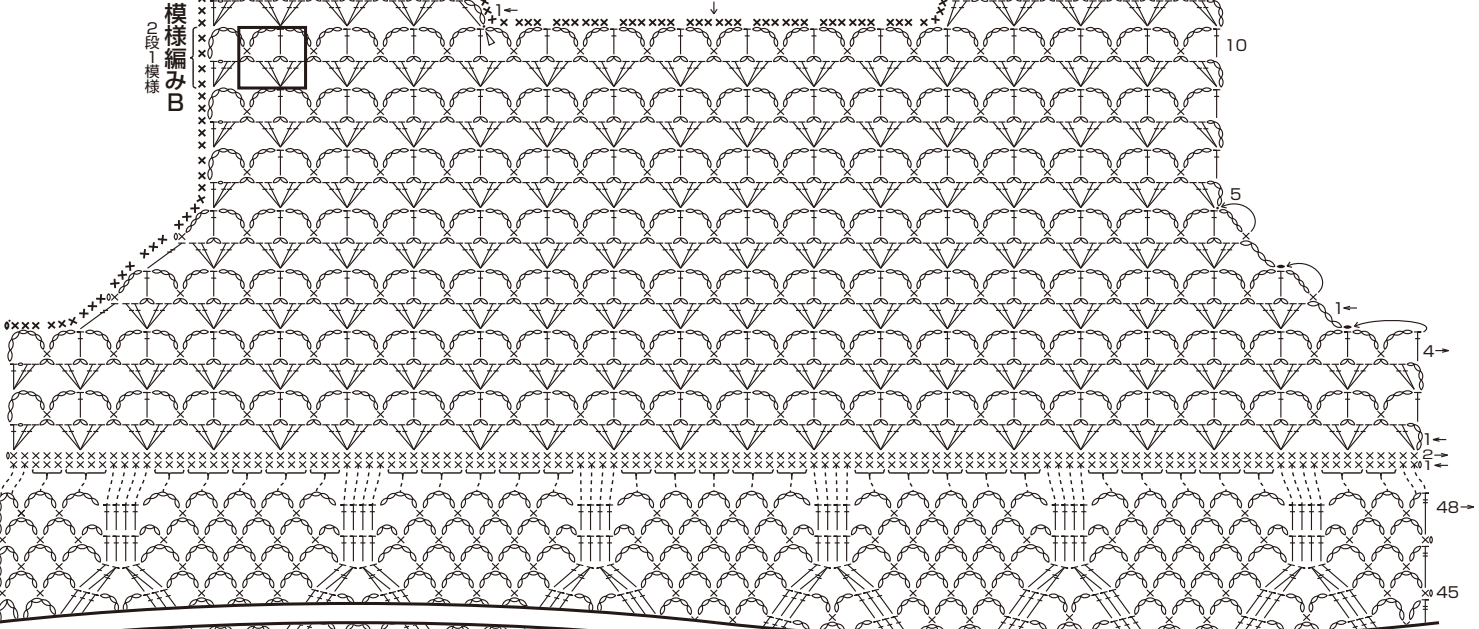
- ※鎖は束に拾う
- × = 細編み
- ┃ = 中長編み
- ┃ = 長編み
- ┃ = 長々編み
- △ = 糸をつける
- ▲ = 糸を切る
- ↷ = 糸を渡す



袖ぐり

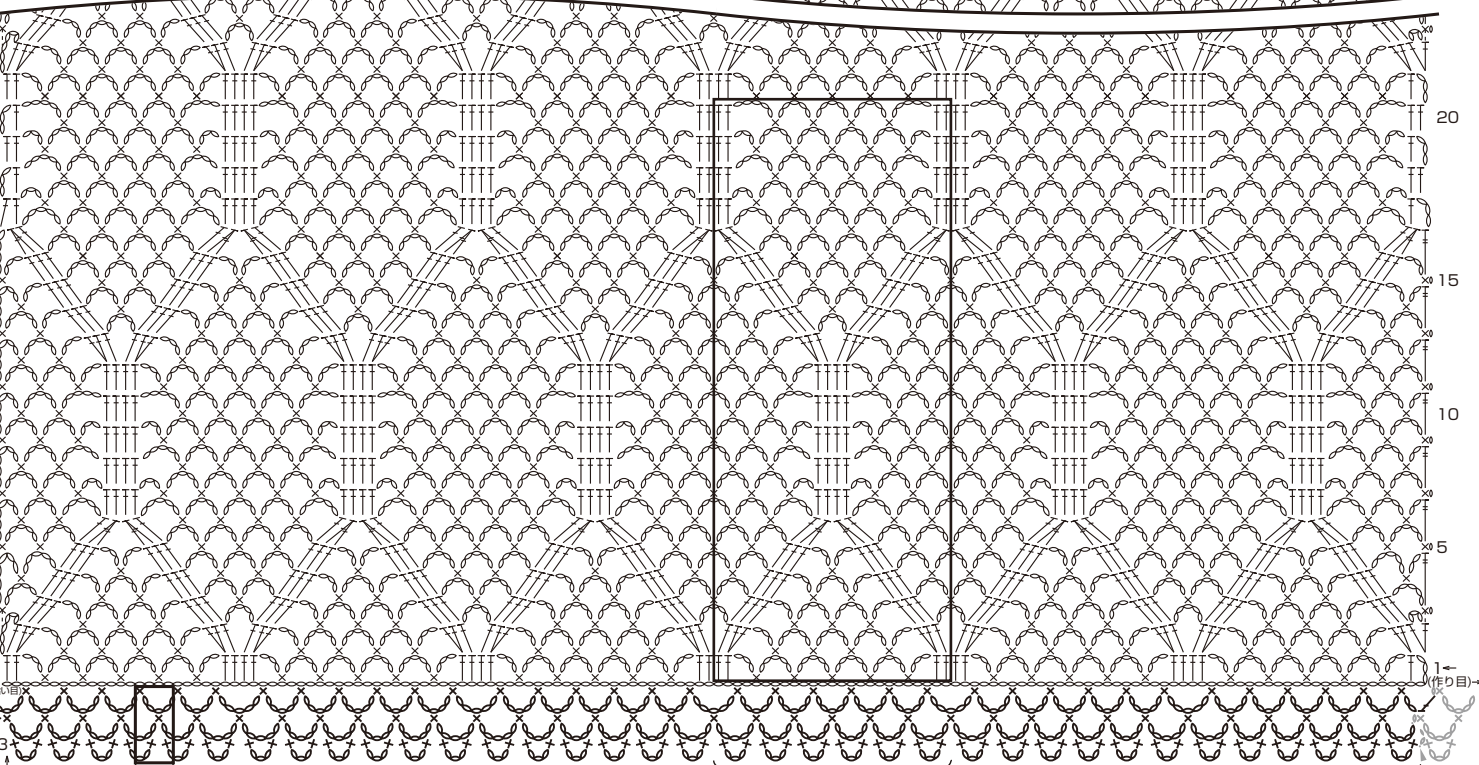
袖ぐり

前衿ぐり



模様編みB

中央



縁編みa  
3段1模様

模様編みA  
25目20段1模様

後身頃  
編み始め